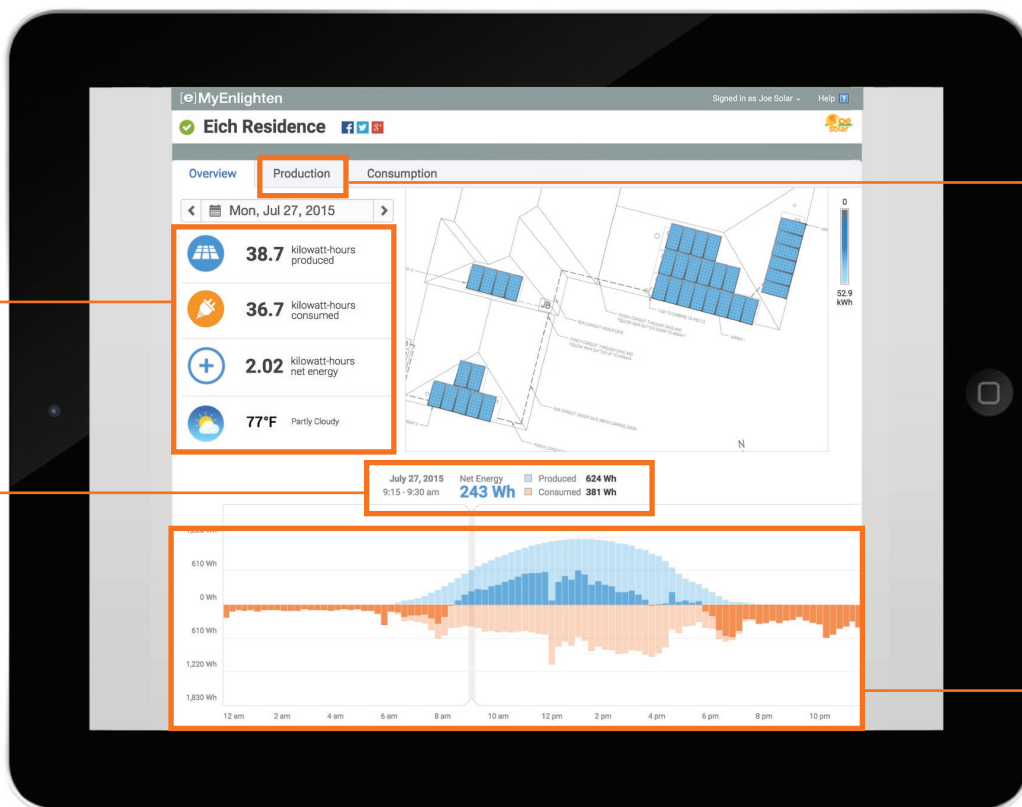


Total Energy Insight

Homeowners can now monitor Enphase System production and home energy consumption from any web-connected device. Installing the Enphase Envoy-S Metered™ ahead of the Enphase AC Battery™ enables you to collect consumption data to determine the number of AC Batteries your customers will require.

MyEnlighten provides at-a-glance detail on system production and home consumption, giving your customers total energy insight.

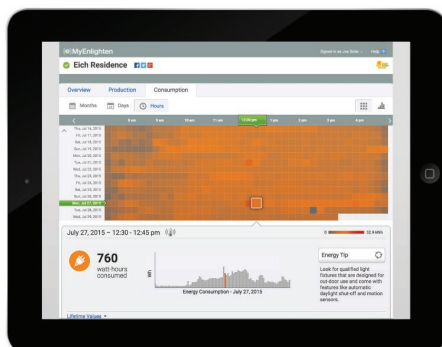
We'll do the math. Your customers can see reports of how much energy they are producing and consuming at any given time.



Monitor Enphase System production in greater detail, and see historical weather data to understand variations in performance.



Easily visualise trends in energy production or consumption. Blue represents electricity production while orange indicates consumption.



NEW Consumption Monitoring View

See home energy consumption data in monthly, daily or fifteen minute intervals.

Consumption monitoring and net energy reporting is enabled through the Enphase Envoy-S Metered, the next generation gateway.

More Value for Your Customers

A key part of the Enphase Home Energy Solution, the Enphase Envoy-S™ enables more **cost effective** and **reliable installations** while creating **greater value** for your customers.



Enphase Envoy-S Metered

- Enables remote maintenance and long-term management
- Flexible networking using either Wi-Fi or cellular connection with Enphase Mobile Connect™
- Rugged and reliable with a 5-year warranty
- Outdoor ready



Enphase Installer Toolkit Mobile App

- Enables faster system commissioning and the confidence to know an installation was a success
- Scan serial numbers using your phone's camera
- Available for Android and iPhone

To find out more about Enphase Envoy-S, visit enphase.com/au/envoy

